

# STOP CHECKING TRAIL CAMERAS

**CuddeLink™**



**Cuddeback®**  
Digital



# CHECK ONE, CHECK THEM ALL

IMAGES FROM UP TO 16 CAMERAS  
COLLECTED ON ONE CAMERA

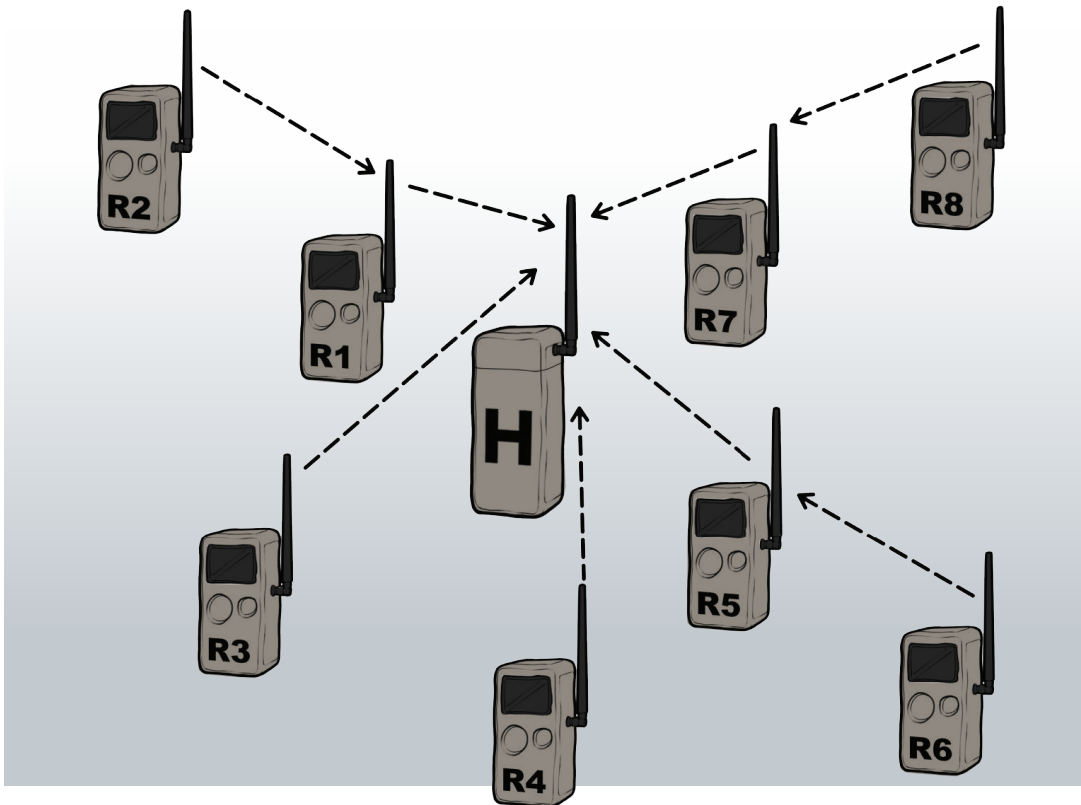


1 HOME





## HOW IT WORKS



Up to 15 Remote cameras (R) send the images they record to the Home (H) camera.

*(There isn't a monthly fee for this service.)*

***Instead of checking all your cameras,  
you only check the Home camera.***



4

5

# 16 CAMERAS, 1 CELL PLAN

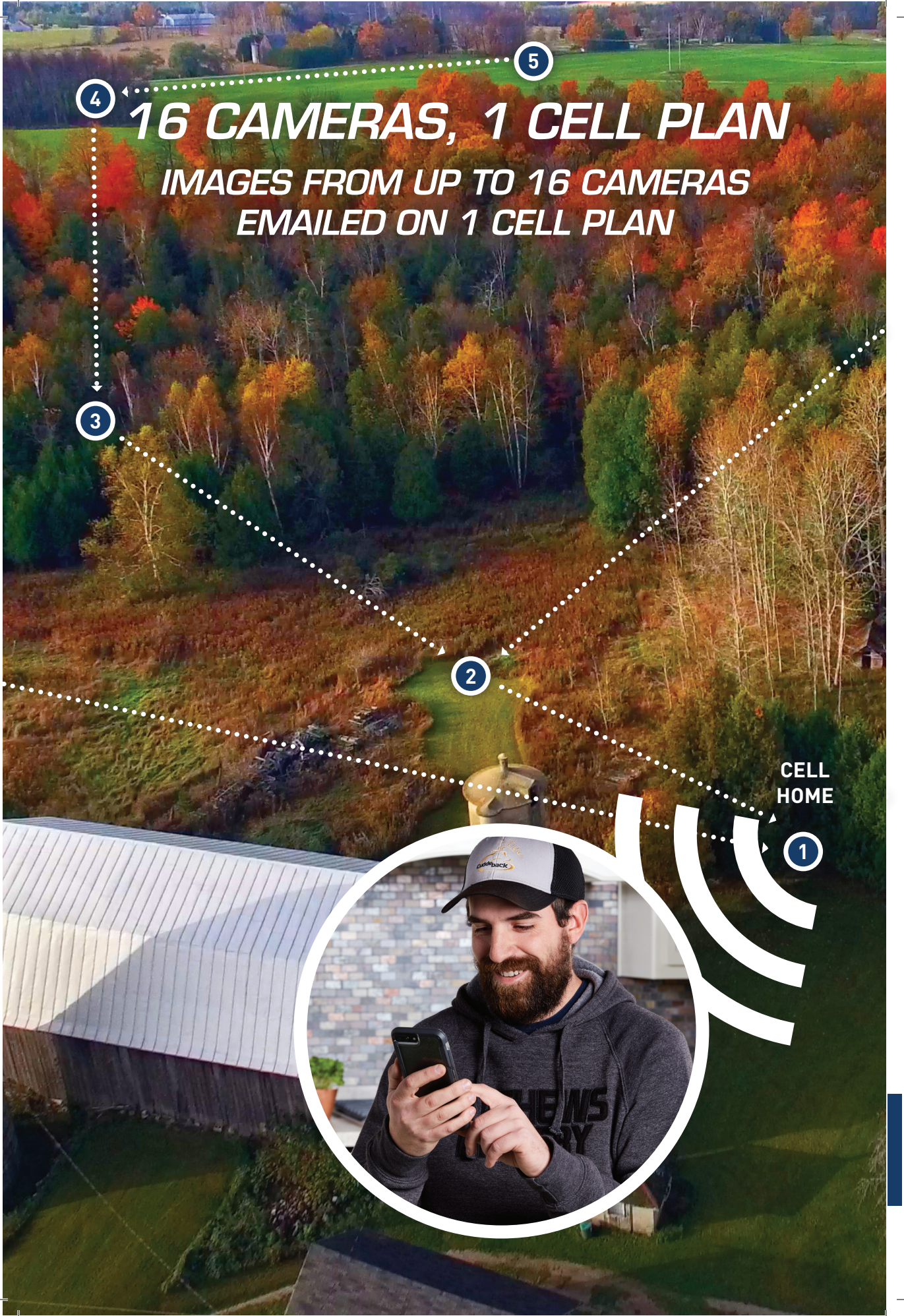
IMAGES FROM UP TO 16 CAMERAS  
EMAILED ON 1 CELL PLAN

3

2

CELL HOME

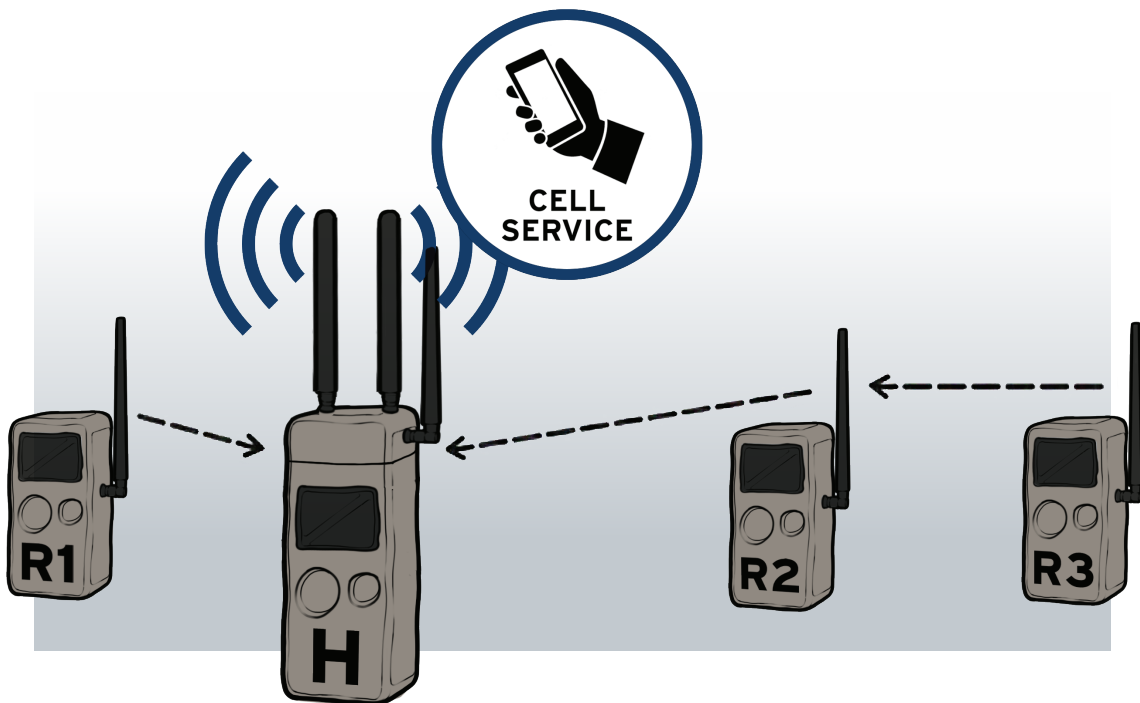
1





# CuddeLink<sup>™</sup> Cell

## HOW IT WORKS



Up to 15 Remote cameras (R) send the images they record to the Home (H) camera. The Home Cell Camera has a built in cell phone that emails the images from all the Remote cameras.

***Instead of paying for multiple cell plans,  
you only pay for 1.***





## HOME OPTIONS

Home receives images from Remote cameras. These products can be used as a CuddeLink™ Home. Only 1 Home is needed for a CuddeLink™ network.

### G SERIES CAMERAS

- Our best CuddeLink™ camera.
- Can be Home, Remote or Repeater.
- Available in Dual Flash™, IR, Black Flash® and strobe.



### J SERIES CAMERAS

- Similar to the G Series with a more economical flash system.
- Can be Home, Remote or Repeater.
- Available in IR and Black Flash®.



### HOME PLUS

- Use for image collecting when you do not need the Home to record images.
- A lower cost Home than using a G or J Series camera.







## **CELLULAR HOME OPTIONS**

Cell Home receives images from Remote cameras and emails them to the user. Only 1 Cell Home is needed for up to 15 Remote cameras. Only 1 cell plan is required.

### **G SERIES CELL CAMERA**

- A G Series camera with cellular capabilities.
- Features all the functionality of the G camera.
- Will email images from itself and up to 15 remote cameras.



### **CELL HOME**

- A cellular enabled Home that does not have a camera.
- Lower cost than using a cellular enabled camera.
- Will email images from up to 15 remote cameras.





# REMOTE OPTIONS

Remote cameras take images and transmits their images to Home.

*Note*—all CuddeLink™ products are compatible with each other. You can create a network with a mix of both G camera, J cameras, and Home products.

See [cuddeback.com](http://cuddeback.com) or product carton for complete specifications.

## J SERIES CAMERAS

- Premium high performance Cuddeback® camera.
- CuddeLink™ built in. Functions as Home, Remote, or Repeater.
- Cannot be a Cell Home, but will send images to a Cell Home.
- Powered by 12 AA batteries. Will work with NiMH rechargeable batteries.
- Modular battery system allows for solar or D battery power (sold separately).
- Available in IR & Black Flash®.

## SPECIFICATIONS

- 20 Megapixels
- ¼ second trigger speed
- High end image sensor
- 24 high power LEDs
- Wide view PIR animal detector
- Advanced full featured user interface



## G SERIES CAMERAS

- Our best camera. Advanced technology and features for leading edge performance.
- Modular CuddeLink™ built in. Functions as Home, Remote, or Repeater.
- Upgradeable to cell by replacing the CuddeLink™ Module with the CuddeLink™ Cell Module (sold separately).
- Powered by 4 D batteries which last longer than AA size batteries for lower operating cost.
- Removable flash module allows upgrading or changing flash type.
- Available in Dual Flash™ (IR & Black Flash® built in), Power House™ IR, Power House™ Black Flash®, and Double Barrel Strobe™.

## SPECIFICATIONS

- 20 Megapixels
- ¼ second trigger speed
- High end image sensor
- 56 high power LEDs
- Zone Control PIR animal detector
- Advanced full featured user interface

## VARIOUS ILLUMINATION OPTIONS:

- 56 LED Dual Flash™ - includes 850nm IR and 940nm Black Flash®
- 56 LED Power House™ IR
- 56 LED Power House™ Black Flash®
- Double Barrel Strobe™ (white flash)





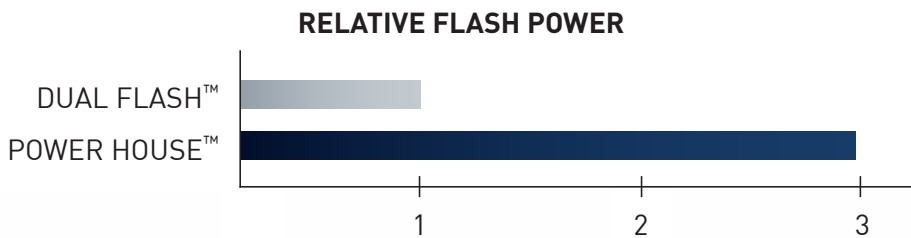


*Extreme*<sup>TM</sup>

## ***CUSTOM BUILT TO YOUR SPECIFICATIONS***

Extreme is Cuddeback's G Series camera built on a customizable modular platform. Pick any combination of flash, CuddeLink<sup>TM</sup>, and cell service and we will custom build the camera for you.

The patented Power House<sup>TM</sup> flash modules are the most powerful illumination on the market – 3 times the power for more illumination, brighter images, longer range and less motion blur.



**CUddeback<sup>®</sup>  
EXTREME  
WITH  
DUAL FLASH<sup>TM</sup>**



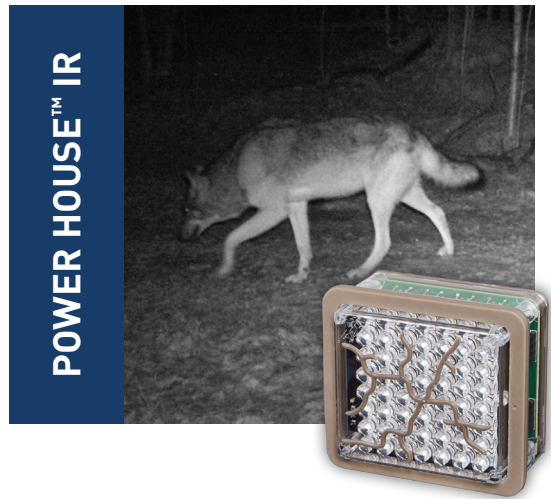
**CUddeback<sup>®</sup>  
EXTREME  
WITH POWER  
HOUSE<sup>TM</sup> IR**



**CUddeback<sup>®</sup>  
EXTREME  
WITH DOUBLE  
BARREL  
STROBE<sup>TM</sup>**

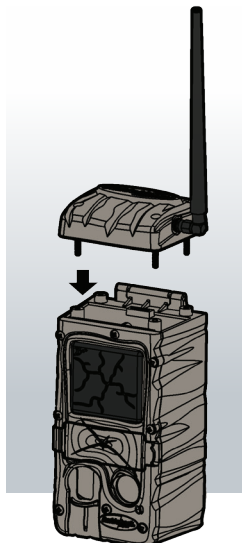


## STEP 1: CHOOSE THE FLASH



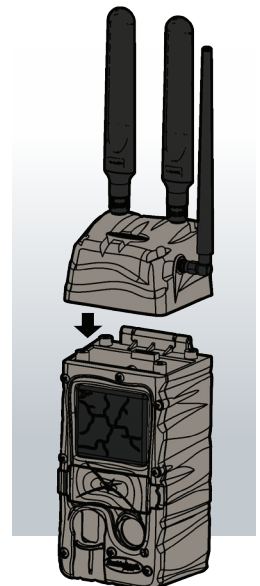
## STEP 2: CHOOSE CUDELINK™

Add CL-CAP to add  
CuddeLink™.



## STEP 3: CHOOSE CELL

Add CELL-CAP to  
add cellular service.





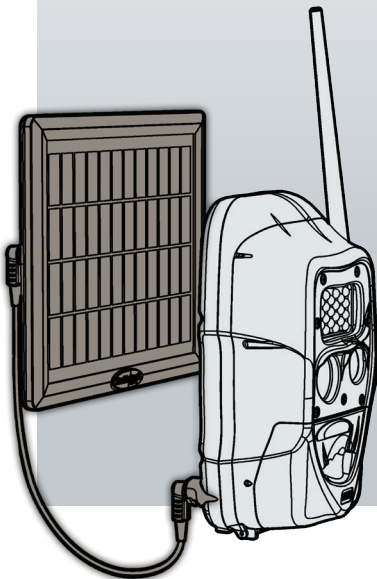
# POWER OPTIONS FOR J SERIES CAMERAS

Run longer with auxiliary battery power or solar power.

With CuddeLink™ you will not be checking your camera very often. Generally, the only time you need to check is to change batteries. To operate CuddeLink™ cameras longer you can add CuddePower to extend battery life.

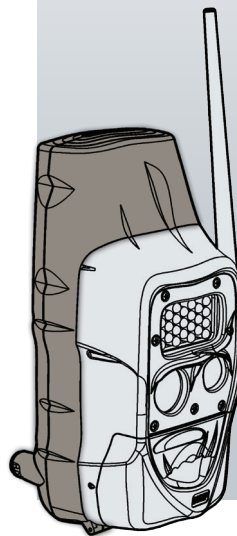
## CUUDEPOWER SOLAR KIT

- Includes 12 NiMH low discharge batteries, solar panel, cable, and mounting bracket.
- With proper ambient light (sun or shade) the camera can operate indefinitely without changing batteries (we have tested to over 2 years).



## J CAMERA D PACK

- Replaces J camera's AA battery pack to operate the camera from 6 D batteries.
- More than doubles the battery life, versus AA batteries, and lowers operating costs.
- Can also use NiMH D rechargeable batteries.
- Solar panel available to charge NiMH batteries (D NiMH batteries sold separately).



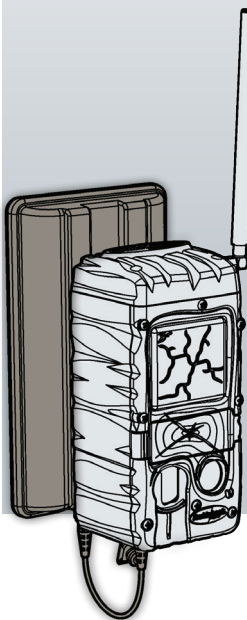
# POWER OPTIONS FOR G SERIES CAMERAS

When an auxiliary CuddePower is used with the G Series camera the external batteries operate the camera, while the camera's internal batteries are in standby mode. The internal batteries will take over when the external batteries are exhausted. This provides you ample time to change the external batteries. With G camera and CuddePower you are assured your cameras are never down due to dead batteries.

## CUDDEPOWER D BOOSTER

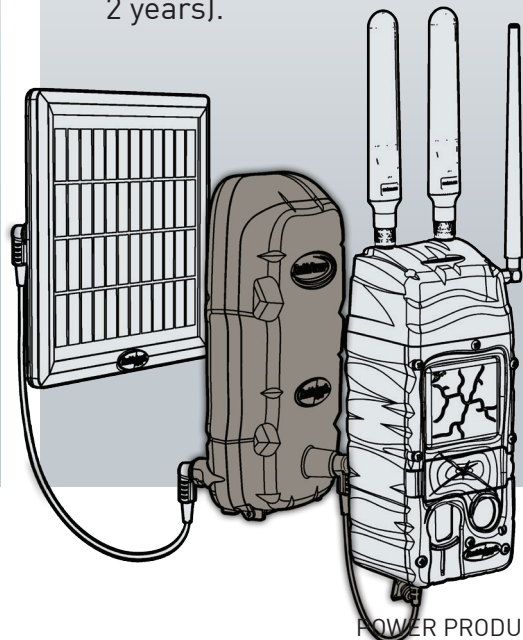
- Adds 6 D batteries to a G Series camera.
- Extend battery life by 3 months or more.
- When combined with camera's internal batteries a combined battery life of over 6 months is possible.
- Camera conveniently slides onto CuddePower.

CuddePower mounts using a Genius mount (included).



## CUDDEPOWER AA BOOSTER

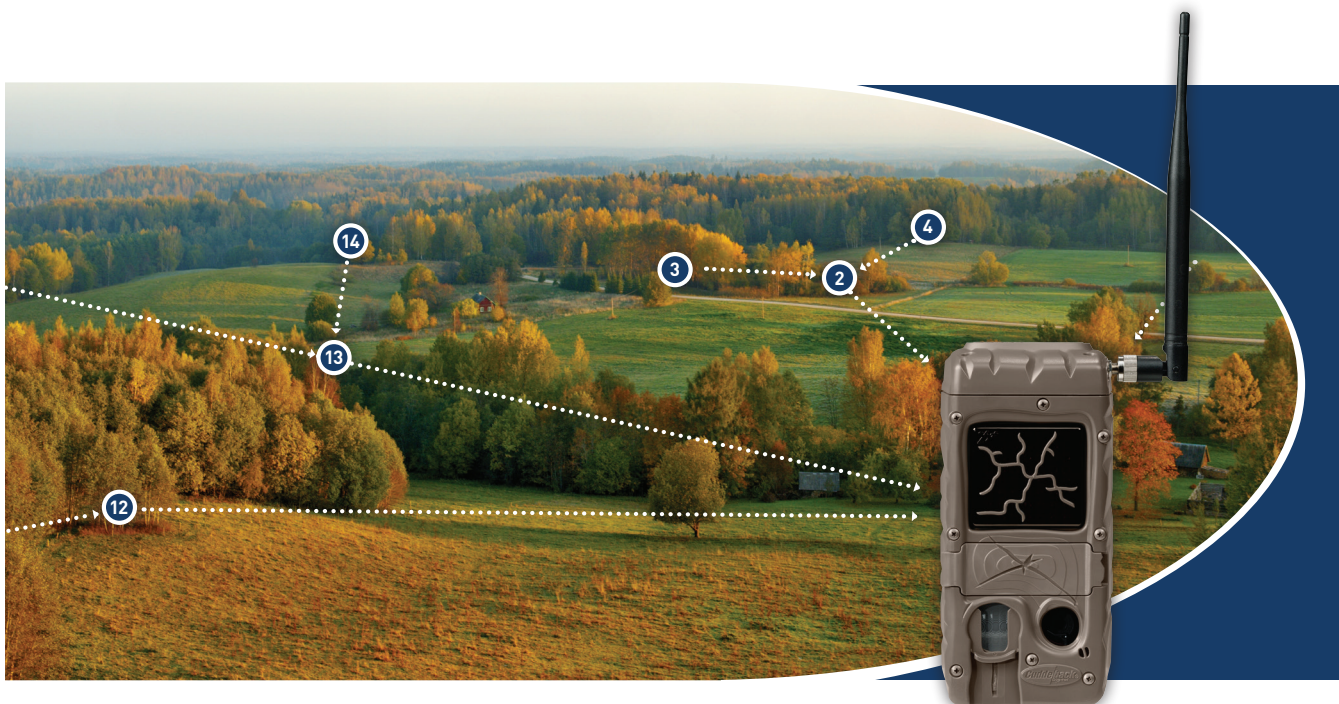
- Adds 12 AA batteries to a G Series camera.
- Compatible with NiMH AA rechargeable batteries.
- Solar charger available to charge the NiMH batteries.
- With proper ambient light (sun or shade) the camera can operate indefinitely without changing batteries (we have tested to over 2 years).







## DETAILS

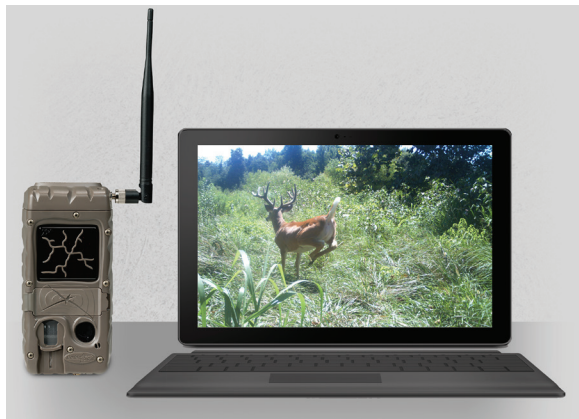


- Cameras automatically connect and send images from up to 15 Remote cameras to 1 Home camera. So instead of checking multiple cameras, you only check 1.
- Camera-to-camera range is up to ½ mile in a forest (¼ mile is typical) and over 1 mile in open terrain.
- Camera's will automatically daisy chain to extend range to miles allowing camera deployment on property from 40 acres to over 1000 acres.
- Cameras can operate for up to 3 months on their built in batteries. Allowing you 3 months without checking the camera or disturbing game. Auxiliary battery and solar power is available to extend battery life indefinitely.
- To maximize performance CuddeLink™ transmits high quality thumbnail images. The original full resolution images are retained on the Remote cameras SD card. See back cover for thumbnail photo examples.

- **Easy to Use** - CuddeLink™ is cutting edge technology, but using it is not difficult. Deploying CuddeLink™ cameras is very much like deploying conventional trail cameras.

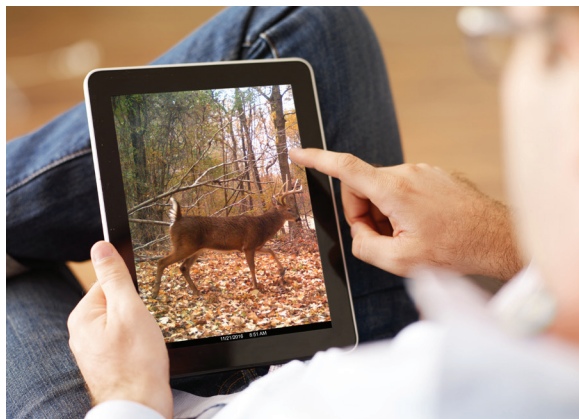


- **More Convenient** – check your cameras more conveniently by placing the Home camera in the most convenient location, such as a vehicle parking spot, tree stand, blind, or in a building.



- **More Often** – because you only check 1 camera and this camera can be conveniently placed, you can check your cameras more often, even numerous times per day such as before you hunt, mid-day, nights, or anytime you desire.

- **No Intrusion** – allows you to check trail cameras without intruding on the animals.



- **No Sound** – if you don't intrude, you don't startle the animals with sound.

- **No Human Scent** – if you don't intrude, you don't leave any human scent.

- **No Fees** - CuddeLink™ proprietary wireless technology does not have a monthly fee.

- **Cell Remote Access** - CuddeLink™ Cell allows images to be emailed on 1 cell plan. Instead of paying for multiple cell phone plans you only need 1 plan for up to 16 cameras. (CuddeLink™ Cell functions regardless of your personal cell phone provider).





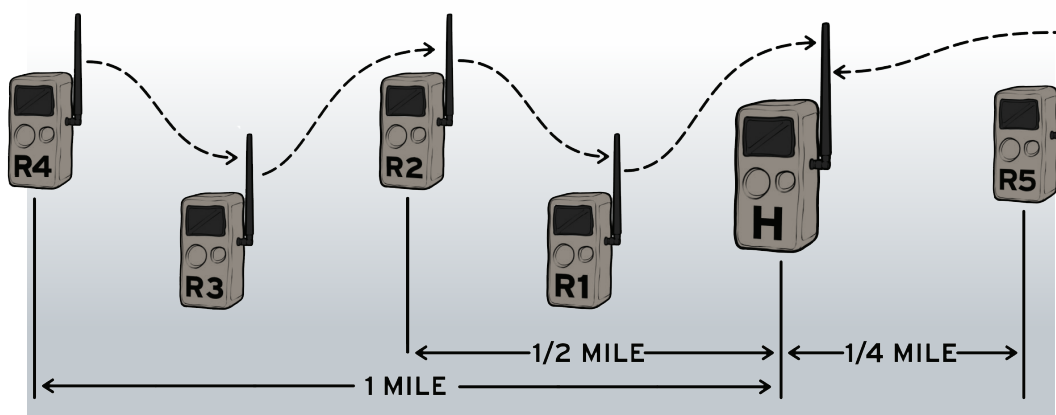
## FAQ

- **Can any camera be home or remote?** You do not have to buy a specific Home or Remote camera. Any G or J Series camera can be configured to be a Remote or a Home. Setting the camera to Home/Remote mode is configured with a setting.

- **What is the Home Plus?** You may want to deploy the Home in a building, parking area, tree stand or some other place where the Home does not need to take pictures. The Home Plus does not have a camera which makes this a lower cost option if your Home does not need to record images.

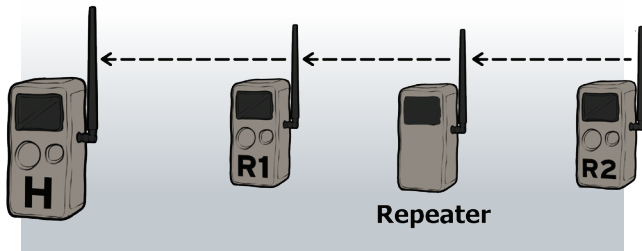
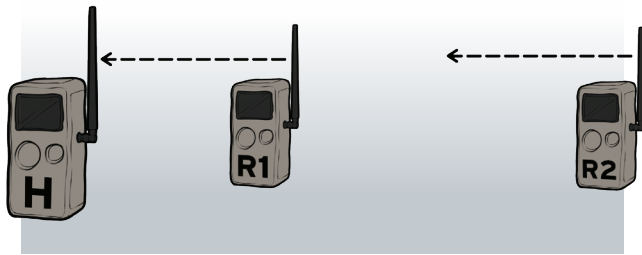


- **How far can CuddeLink™ transmit?** CuddeLink™ Remote cameras can be deployed up to a few miles from the Home camera. The camera-to-camera range is up to ½ mile in a forest (¼ mile typical) but the cameras will automatically create a daisy chain to relay the images from camera to camera, allowing you to extend the range to over 2 miles.

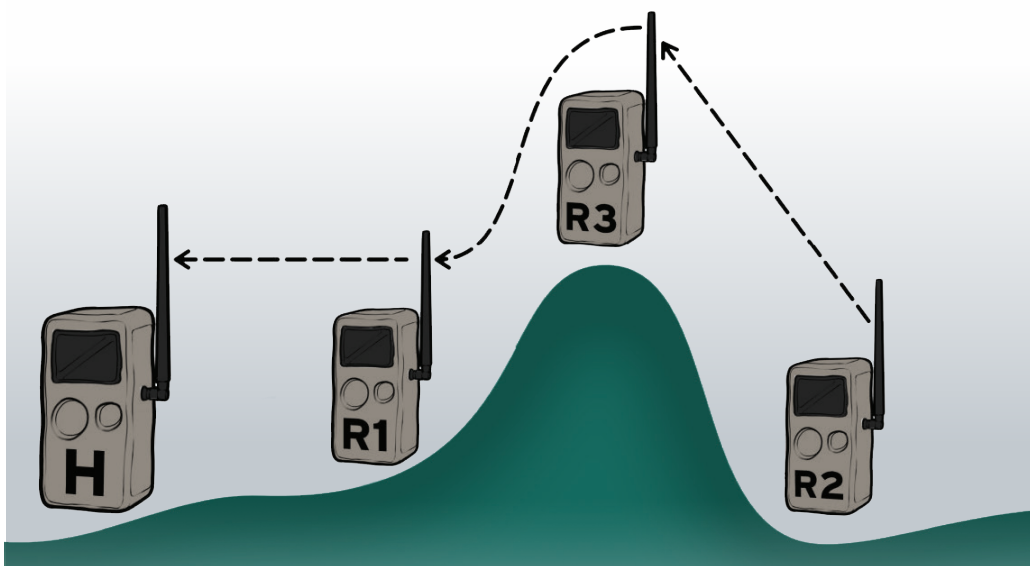


Typical CuddeLink™ range in a forest.

- **How can I extend range?** You can extend the distance between 2 cameras by inserting a 3rd camera between them, or inserting a Repeater. All cameras can function as a Repeater but we offer a money saving option. The Home Plus can function as a Repeater and will relay images from one camera to the next. This is lower cost than using a camera to perform the repeater function.



- **Will CuddeLink™ work around hills?** The CuddeLink™ radio signal is blocked by earth. Deploying a camera or Repeater on top the hill will allow the radio signal to be transmitted.



- **Are G Series cameras compatible with J Series cameras?** Yes, all CuddeLink™ cameras and products are compatible with each other.
- **Do all CuddeLink™ cameras need an SD Card?** Yes, a SD card must be installed in every CuddeLink™ camera.



## **SETUP & DEPLOYMENT**

CuddeLink™ is easy to setup and use. Generally, it only takes a few minutes longer to setup CuddeLink™ verses a conventional camera.

### **DEPLOY HOME CAMERA**

One and only one camera must be set to Home mode.

1. Set the Mode to Home.
2. Set the Channel.
3. Optional – set a unique location ID number and camera name.
4. Deploy and arm the camera.





## SETUP REMOTE CAMERA

The Remote cameras take images and send them to the Home camera. You can deploy up to 15 Remote cameras.

1. Set the Mode to Remote.
2. Set the Channel the same as the Home camera.
3. Optional – set a unique location ID number and camera name.
4. Use the CL Level command to verify the camera can receive a radio signal.
5. Deploy and arm the camera.
6. Continue to deploy additional Remotes in the same manner.



## CHECKING HOME CAMERA

Checking CuddeLink™ is identical to checking a regular trail camera. Remove the SD card from Home and view the images, but instead of seeing images from one camera, you view images from all your remote cameras.

## DEPLOYING HOME CELL CAMERA

Setting up the Home Cell is identical to setting up a Home camera. The only extra steps are to enter your email address, and verify you have cell reception.

You can control how often emails are sent. Options are hours (1, 2, 3, 4, 6, 8, 12) or batches of images (1, 5, 10, 15, 20, 25, 30).

## CHECKING CELL CAMERA

You don't have to check the cell camera. The images are delivered to your preferred email destination.





920-347-3810



CUDDEBACK.COM



Actual CuddeLink™ thumbnail images. Original high resolution images are saved on the remote camera's SD card.